

Pediatrics

Specialty  
Steel

Furnishings

# NOVUM

## Medical Products

## Wood Front Bassinet

*Model NB-WFxD-3DL*



*Pictured with optional  
polycarbonate basket and  
mattress pad*

## Features:

- Constructed of reinforced, heavy-gauge polished stainless steel for safety and durability
- 3DL (3 Dimension Laminate) Seamless Thermofoil wood front construction with 3 layers of material for durability
- 3" swivel, ball bearing, non-marking casters with threadguard
- 2 braking, 2 swivel casters
- Trendelenburg can be created from either end of the bassinet
- Deep, secure basket well
- Quiet self-closing cabinet
- Made in the USA
- **Options:**
  - Polycarbonate basket: *Model 69576x1-P*
  - Bassinet Mattress: *Model 7028x21*
  - Extender shelf: *Model 7028EX*

## Specifications:

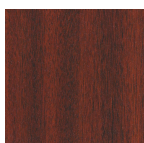
- Overall: 31"L x 17.5"W x 37.75"H
- Drawer: 26.25"L x 15.25"W x 5.75"H

**Warranty:** Lifetime on all steel components.  
1 Year on all other parts.

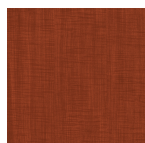
## Finish Options:



Fusion Maple



Mahogany



Crossfire Java



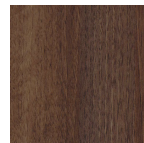
Studio Uptown



Majestic Walnut



Mocha Cherry



Amati Walnut

Phone | 716.759.7200  
Toll Free | 800.274.2742  
Fax | 716.759.0700  
Email | [info@novummed.com](mailto:info@novummed.com)  
[www.novummed.com](http://www.novummed.com)