

Chairs



Model NV-DC-036AC



Model NV-DC-036SC

Features:

- All welded Construction
- Lightweight Aluminum Frame
- 15 Different Wood Grain Finishes
- An Extensive Selection Of Graded in Crypton Fabrics and Vinyls
- Stacks 5 High
- High Density Molded Foam Cushions
- Meets Cal T.B. 117 Fire Rating
- Triple Umbrella Metal or Nylon Clear Booted Glides
- Optional front Leg Dual Wheel Casters, available in either Chrome, or Brushed Gold finish
- Available with arms: *Model NV-DC-036AC* or without arms: *Model NV-DC-036SC*

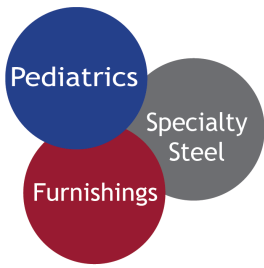
Specifications

Model NV-DC-036AC:

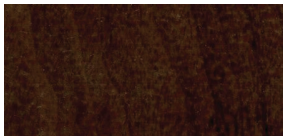
- Overall: 24"W x 24"D x 38"H
- Arm: 25.25"

Model NV-DC-036SC

- Overall: 19.25"W x 24"D x 38"H
- Seat: 19"W x 20"D x 19"H
- Shipping Weight: 18 lbs.
- COM: 1 yard
- Weight Capacity 350 lbs.
- Warranty: 12 Years



Wood Finish Options



Dark Walnut



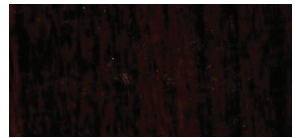
American Walnut



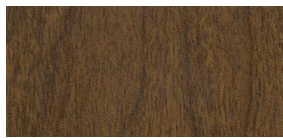
Dark Mahogany



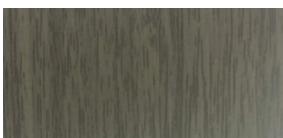
Royal Cherry



Espresso Walnut



Hickory



Classic Gray



White Ash



Harvest Maple



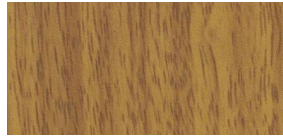
Mid Cherry



Light Oak



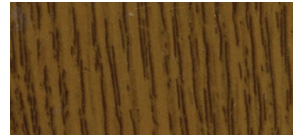
Light Teak



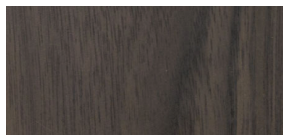
Golden Oak



Old Cherry

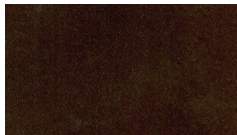


Spice Brown



Slate

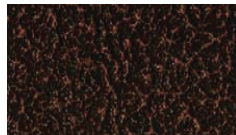
Powder-Coat Finish Options



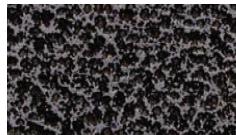
Deep Rust



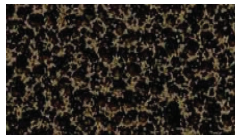
Mahogany



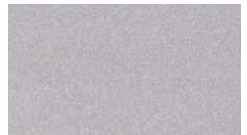
Coppervein



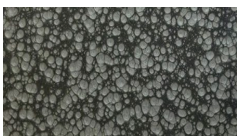
Silvervein



Goldvein



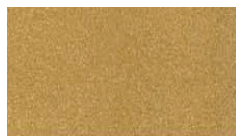
Silver



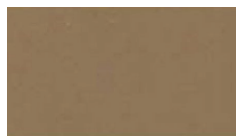
Galaxy Gray



Eggplant



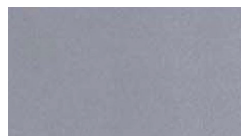
Sun Gold



Metallic Rust



Matte Black



Mirror Blue