

## Cruiser III Wheelchair

HCPCS: K0003,K0003



FIGURE A



FIGURE B



FIGURE C



FIGURE D

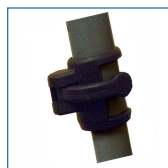


FIGURE E

- Built-in seat rail extensions and extendable upholstery easily adjust seat depth from 16" to 18" (Figure A - C)
- Weighs under 36 lbs (excluding front riggings)
- Carbon steel frame with silver vein finish
- Removable flip-back arms allow for easy transfer (Figure D)
- New frame style eliminates seat guides and allows for custom back inserts and accessories
- Nylon upholstery is durable, lightweight, attractive and easy-to-clean
- Composite, Mag-style wheels are lightweight and maintenance free
- 8" front casters are adjustable in three positions
- Padded armrests provide additional comfort
- Comes with swing-away footrests or elevating leg rests with tool-free adjustable length riggings (Figure E)
- Precision sealed wheel bearings in front and rear ensure long-lasting performance and reliability
- Dual axle provides easy transition of seat height to hemi-level
- Comes with push-to-lock wheel locks

### PRODUCTS

### Description

PRODUCTS	Description
K316ADDA-ELR	Cruiser III, 16"Lt. Wt, FlipBkDskArm, 1/cs
K316ADDA-SF	Cruiser III, 16"Lt. Wt, FlipBk, RemvArm, 1/cs
K316ADFA-ELR	Cruiser III, 16"Lt. Wt, FlipBkFullArm, 1/c
K316ADFA-SF	Cruiser III, 16"Lt. Wt, FlipBkFullArm, 1/c
K316DDA-ELR	Cruiser III, 16"Lt. Wt, FlipBk, DeskArm, 1/cs
K316DDA-SF	Cruiser III, 16"Lt. Wt, FlipBk, RemArm, 1/cs
K316DFA-ELR	Cruiser III, 16"Lt. Wt, FlipBk, FullArm, 1/cs
K316DFA-SF	Cruiser III, 16"Lt. Wt, FlipBk, FullArm, 1/cs
K318ADDA-ELR	Cruiser III, 18"Lt. Wt, FlipBk, DeskArm, 1/cs
K318ADDA-SF	Cruiser III, 18" Wt Flip Back
K318ADFA-ELR	Cruiser III, 18"Lt. Wt, FlipBkFullArm, 1/c
K318ADFA-SF	Cruiser III, 18"Lt. Wt, FlipBkFullArm, 1/c
K318DDA-ELR	Cruiser III, 18Lt. Wt, FlipBk, ElvLgRst, 1/cs
K318DDA-SF	Cruiser III, 18"Lt. Wt, FlipBk, SwgFt, 1/cs
K318DFA-ELR	Cruiser III, 18"Lt. Wt, FlipBk, FullArm, 1/cs
K318DFA-SF	Cruiser III, 18"Lt. Wt, FlipBk, 1/cs
K320ADDA-ELR	Cruiser III, 20"Lt. Wt, FlipBk, 1/cs
K320ADDA-SF	Cruiser III, 20"Lt. Wt, FlipBk, RemArm, 1/cs
K320ADFA-ELR	Cruiser III, 20"Lt. Wt, FlipBkFullArm, 1/c
K320ADFA-SF	Cruiser III, 20"Lt. Wt, FlipBkFullArm, 1/c
K320DDA-ELR	Cruiser III, 20"Lt. Wt, FlipBk, DskArm, 1/cs

PRODUCTS	Description
K320DDA-SF	CruiserIII,20"Lt.Wt,FlipBk,RemDskArm,1/cs
K320DFA-ELR	Cruiser III,20"Lt.Wt,FlipBk,FullArm,1/cs
K320DFA-SF	Cruiser III,20"Lt.Wt,FlipBk,FullArm,1/cs

SPECIFICATIONS	Description
Back Height	16"
Carton Shipping Weight	43 lbs or less
Height	35"
Length with Riggings	42"
Product Weight	35 lbs   36 lbs   38 lbs
Seat Depth	16" - 18"
Seat To Floor Height	17.5" - 19.5"
Warranty	Limited Lifetime
Weight Limit with 16 Seat	300 lbs
Weight Limit with 18 Seat	300 lbs
Weight Limit with 20 Seat	350 lbs
Width Closed	12"

ACCESSORIES	Description
STDS860	Forwrd Stablzrs/Univ.Fit ,1pr/bx, CS
STDS1002	Caster,8in Sentra,Viper,Astaire,1/ea, CS
STDS819	Anti Tippers,Cruiser,1pr/bx, CS
STDS1034	Wheelchair Cane/Crutch Holder,1/ea, CS
STDS801	Brake Handle Ext.,8", 1/ea, CS
WASR	Limb Support, Right,1/cs, CS
STDS801GT	WheelLockExtension,ViperGT,SSP2,1/ea, CS
STDS834	OverheadAnti-Theft Bar,Single,1/ea, CS
STDS806	Anti-Fold/Theft Device for w/c,1/ea, CS
STDS820	Telescoping IV Pole,W/C, 1/bx, CS
STDS856	Seat Belt,60"Velcro-type,1/ea, CS
STDS851	Seat Belt, Velcro Close,1/ea, CS
STDS855	Seat Belt,60" Auto-type,1/ea, CS
STDS850	Seat Belt, Clasp Type,1/ea, CS
STDSSHK-K3	Super Hemi Kit, Cruiser 3 & X4, 1/ea, CS
STDSK234-PTL	Pull-To-Lock Brake, Cruiser, Left, 1/ea, CS
STDS803	Oxygn Tank Holdr for W/C,1/cs, CS

PARTS	Description
STDS8M462R	BrakeAsm.DetachableArmRT,SS2,1/ea, CS
STDS8M4518	SeatUpholstery18",SS1,1/ea, CS
STDS8M4651	ForkStemCap,SS2,BS,Cruiser,1/ea, CS
STDS3J2450	Footrest Bumper,Cruiser3,1/ea, CS
STDS8M4601	ForkStemBearing,SSP2,Cruiser,1/ea, CS
STDS3J2424	Wheel24in Blk.Handrl,Cruiser3,SSP,BS,1/e, CS
STDS3J2400	Handrim,Cruiser3,1/ea, CS
STDS3J2413	Rear Axle Bearing,Cruiser3,1/ea, CS
STDS3J2421	HubCap,RearWheel,Cruiser3,SSP,BS,1/ea, CS
STDS3J2410R	Footplate&HeelLoop,Right,Cruiser,SSP,CS, CS
STDS3J2432	Caster with 8mm Bearings, 1/ea, CS
STDS001000	Axle Cap 8mm, 1ea, CS
STDS3J2408	BackUphol.18"Cruiser3,Blk.1/ea, CS
STDS3J24SF	Footrest Set,Cruiser3,SSP, 1pr/set, CS

## PARTS

## Description

STDS8M462L	BrakeAsm.DetachableArmLt,SS2,1/ea, CS
LK3JELR	ELR Set,Black,1Pair eq EA, CS
STDS831	Heel Loops, 1pr/bx, CS
STDSDSKVB	UniversalWheelChairVinylDeskArmPad,1/ea, CS
STDSFLVB	UniversalWheelChairVinylFullArmPad,1/ea, CS
STDS004609-9	Hand Rim Screw Set of 9,1Bag, CS